



NEXT GEN POWER

FOR YOUR SMARTPHONE



FUEL SERIES 4

The Next Gen of mobile charging

Next Gen Power is here.

The Fuel Series 4 are made with all the latest tech and new features to bring you Next Gen Charging speeds. It features a powerful 20W USB-C output that's designed to charge your smartphone faster & more efficient than ever.

The Fuel Series 4 includes 3 brand new power products; two powerbanks and a solar charger. All designed to give you #MoreEnergy.



**MOST ENERGY
EFFICIENT**



**ULTRAFAST
CHARGING***



**3X USB
PORT**



**USB-C™
EFFICIENCY**

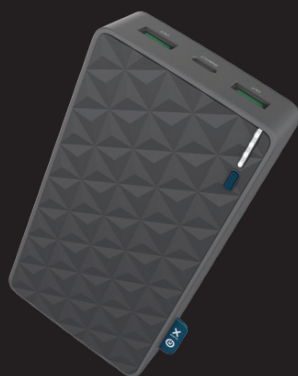
NEXT GEN POWER

FOR YOUR SMARTPHONE



Xtorm 20W Fuel Series Power Bank 10.000

This 10.000mAh Power Bank can charge a high-end smartphone up to 59% in just half an hour.



Xtorm 20W Fuel Series Power Bank 20.000

This 20.000mAh Power Bank can fast charge a modern smartphone up to **8x** and is more efficient than any other Power Bank.

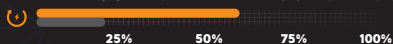


Xtorm 20W Fuel Series Solar Charger 10.000

This 10.000mAh Solar Power Bank can fast charge at 20W and recharge itself in the sun!

SMARTPHONE CHARGING SPEED

30 min. charging a smartphone: Xtorm 20W charging vs regular charging



HOW MANY CHARGES

Smartphone charges



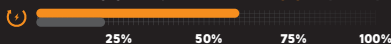
RECHARGING TIME

Recharging powerbank to 100% with 20W USB-C PD



SMARTPHONE CHARGING SPEED

30 min. charging a smartphone: Xtorm 20W charging vs regular charging



HOW MANY CHARGES

Smartphone charges



RECHARGING TIME

Recharging powerbank to 100% with 20W USB-C PD



SMARTPHONE CHARGING SPEED

30 min. charging a smartphone: Xtorm 20W charging vs regular charging



HOW MANY CHARGES

Smartphone charges



RECHARGING TIME

Recharging Solar Charger to 100% with 20W USB-C PD



RECHARGED BY SOLAR

Recharging 1 phone with the power of the sun



SPECIFICATIONS

Battery	10.000mAh Li-Polymer
Output	1x USB-C Power Delivery 20W (5V/3A, 9V/2.2A, 12V/1.5A) 2x USB QC 3.0 (5V/3A, 9V/2A, 12V/1.5A)
Total output	20W
Input	USB-C Power Delivery 18W (5V/3A, 9V/2A, 12V/1.5A)
Dimensions	136x71x15mm

SPECIFICATIONS

Battery	20.000mAh Li-Polymer
Output	1x USB-C Power Delivery 20W (5V/3A, 9V/2.2A, 12V/1.5A) 2x USB QC 3.0 (5V/3A, 9V/2A, 12V/1.5A)
Total output	20W
Input	USB-C Power Delivery 18W (5V/3A, 9V/2A, 12V/1.5A)
Dimensions	136x71x26mm

SPECIFICATIONS

Battery	10.000mAh Li-Polymer
Output	1x USB-C Power Delivery 20W (5V/3A, 9V/2.2A, 12V/1.5A) 2x USB QC 3.0 (5V/3A, 9V/2A, 12V/1.5A)
Total output	20W
Input	USB-C Power Delivery 18W (5V/3A, 9V/2A, 12V/1.5A)
Dimensions	136x71x15mm